

Lochgoilhead Responses 2019

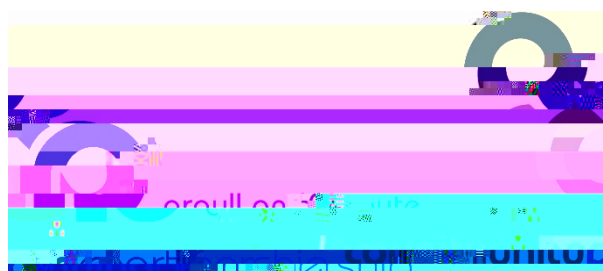
Priority Areas for Improvement:



Work and Local
Economy

Moving
Around

Public Transport



How good is your place? Area wide engagement results using the Place Standard Tool

Between May and October 2019, the Community Planning Partnership (CPP) used

Thematic areas by lowest score to highest score

Q1. Moving Around: Can I easily walk and cycle around using good-quality routes?

4 responses in total – Average Score of 4.0							
Score of 1	Score of 2	Score of 3	Score of 4	Score of 5	Score of 6	Score of 7	No response
1 responses	0 responses	0 responses	1 response	1 responses	1 responses	0 responses	0 responses

Comments

Q2. Public Transport: Does public transport meet my needs?

4 responses in total – Average Score of 4.25							
Score of 1	Score of 2	Score of 3	Score of 4	Score of 5	Score of 6	Score of 7	No response
0 response							

Q3. Traffic and Parking: Do traffic and parking arrangements allow people to move around safely?

4 responses in total – Average Score of 6.25							
Score of 1	Score of 2	Score of 3	Score of 4	Score of 5	Score of 6	Score of 7	No response
0 responses	0 responses	0 responses	0 responses	1 responses	1 responses	2 responses	0 responses

Comments

Q4. Streets and Spaces: Do the streets and public spaces create an attractive place that is easy to navigate?

4 responses in total – Average Score of 6.5							
Score of 1	Score of 2	Score of 3	Score of 4	Score of 5	Score of 6	Score of 7	No response
0 responses	0 responses	0 responses	0 responses	0 responses	2 responses	2 responses	0 responses

Comments

Simple road layout. Could be made safer if the village speed limit was enforced at 20mph
Recent signage has been an asset.

Q5. Natural Space:

Q6. Play and Recreation: Can I access a range of places for play and recreation?

4 responses in total – Average Score of 5.0							
Score of 1	Score of 2	Score of 3	Score of 4	Score of 5	Score of 6	Score of 7	No response
0 responses	0 responses	1 responses	0 responses	1 responses	2 responses	0 responses	0 responses

Comments

Only works because of a privately owned Holiday Village.
Limited

Q7. Facilities and Amenities: Does my place have the things I need to live and enjoy life? This could include shops, schools, libraries, health services or places to eat and drink.

4 responses in total – Average Score of 4.75							
Score of 1	Score of 2	Score of 3	Score of 4	Score of 5	Score of 6	Score of 7	No response
0 responses	1 responses	0 responses	1 responses	0 responses	1 responses	1 responses	0 responses

Comments

Only because of a privately owned Holiday Village.
good local provision available at Drimsynie House Hotel

Q8. Work and Local Economy: Is there an active local economy with good-quality work opportunities?

4 responses in total – Average Score of 2.75							
Score of 1	Score of 2	Score of 3	Score of 4	Score of 5	Score of 6	Score of 7	No response
1 responses	1 responses	0 responses	2 responses	0 responses	0 responses	0 responses	0 responses

Comments

I do not know how to address this.
There are a few large organisations mainly catering to tourism. Not too much variety available for new up and coming business and no business opportunities i.e. business outlets/industrial areas - this has been eaten up over the years by organisations turning it into holiday accommodation.

Q9. Housing and Community: Do the homes in my area support the

Q11. Identity and Belonging: Does this place have a positive identity and do I feel I belong?

4 responses in total – Average Score of 5.75							
Score of 1	Score of 2	Score of 3	Score of 4	Score of 5	Score of 6	Score of 7	No response
0 responses	0 responses	0 responses	1 responses	0 responses	2 responses	1 responses	0 responses

Comments

I love the community feeling.
The village has good identity, community networks that accommodate all villagers.

Q12. Feeling Safe: Do I feel safe here?

4 responses in total – Average Score of 6.25							
Score of 1	Score of 2	Score of 3	Score of 4	Score of 5	Score of 6	Score of 7	No response
0 responses	0 responses	0 responses	0 responses	1 responses	1 responses	2 responses	0 responses

Comments

So far so good. Touch wood.

The village is a safe place to live in, however, lack of police presence (and the selling of the police station) over the years has shown where individuals have taken advantage of this. This is especially noticeable over weekends.

Q13. Care and Maintenance: Are buildings and spaces well cared for?

4 responses in total – Average Score of 5.75

Score of 1 : ~~Score of 22~~

Q14. Influence and Sense of Control: Do I feel able to take part in decisions and help change things for the better?

4 responses in total – Average Score of 5.5							
Score of 1	Score of 2	Score of 3	Score of 4	Score of 5	Score of 6	Score of 7	No response
0 responses	0 responses	0 responses	0 responses	2 responses	2 responses	0 responses	0 responses

Comments

Not really. The various village organisations/trusts have the same faces year after year.
For the most part, however, there is sometimes still the feeling what a few want does not really suit the many.

What are the main issues and priorities for change that you have identified?

What actions could be taken to deal with these?

Reduce public bus size to 14 seats Increase bus service times to at least two in and two out a day to both Dunoon and Dumbarton Reduce village max speed to 20mph
Provision of training to encourage new recruitment (n)0.6 (t)-6 214ghe n-3 (ra 10.6 (o)2.3