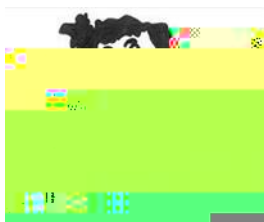




Early Learning and Childcare: Information for Parents



People (Scotland) Act 2014. This term has been used in place of Pre-School Education in recognition of this. The abbreviation 'ELC' (Early Learning and Childcare) will be used throughout this document. Throughout

Contents

Early Learning and Childcare: Information for Parents.....	0
Contents.....	2
Introduction	3
Funded ELC Entitlement.....	3
ELC Settings.....	4
Eligibility.....	5
ELC Space Application Process.....	5
Outcome of Application.....	6
Additional Year of ELC.....	6
Changing your ELC placement	7
Funded ELC for 2 year olds.....	8
Eligibility.....	8
Start date	8
Application Process.....	9
Existing 2 year old ELC placements & 3 Year Old ELC registration week.....	9
Frequently Asked Questions	10
Appendix One: ELC Spaces Allocation.....	12
Appendix Two: New Application Admission Priorities.....	13
Appendix Three: Ballot Procedure.....	14
Contact Information.....	15

ELC Settings

There are a range of ELC settings across Argyll & Bute. As well as local authority managed nurseries, we work in partnership with a number of childminders and providers in the private, voluntary & independent sectors to increase the choice

Outcome of Application

If you wish to change the ELC setting you applied to after registration week, please note this will be classed as a late application at the new ELC setting (meaning lowest priority if the ELC setting was oversubscribed).

If there are not enough places at your chosen ELC setting a ballot will be held using the new application admission priorities of that setting (see Appendix 2 for local authority setting priorities). Partner ELC settings may follow their own admission priorities. If you are unsuccessful in the ballot for your preferred setting, Early Years will ask you for your 2nd choice or 3rd choice etc, until you are offered an ELC place (see Appendix 3 for ballot procedure).

Your chosen ELC setting will likely get in touch for further application details such as health information, over the course of Term 2.

However, official confirmation of your child's ELC placement will be sent by letter directly by Early Years. This is typically by the end of May, due to a number of processes that follow registration week. We must ensure there is sufficient capacity at the setting you have applied for and that staffing levels are correct as per Care Inspectorate standards.

Additional Year of ELC

Parents of children still aged 4 at the start of the school year (school commencement date) have the right for them to start primary school the following

These children, with birth dates between the second day of term in August and the end of February, will automatically receive an additional year of funded ELC. For birth dates between March and the first day of

Funded ELC for 2 year olds

Applications can only be made when your child has turned 2.

1. Parent contacts Early Years and requests an application form.
2. Parent completes form in full and provides 2 supporting documents (birth certificate copy & proof of address letter) and evidence for the reason why they are eligible.
3. Parent sends application form back to Early Years.
4. Early Years confirms eligibility and establishes space at ELC setting by 1st, 2nd choice provided.

If you require support to fill out the forms please contact Early Years or speak to your Health Visitor.

Please note the Jobcentre Plus cannot confirm Universal Credit eligibility, you should note take the form to them for this evidence type.

Children currently accessing a 2 year old funded ELC space, who intend to remain at the same ELC setting for their 3 year old funded ELC, should **not** apply during registration week. Your ELC setting will be in touch to confirm your wishes in December.

Children currently accessing a 2 year old funded ELC space, who wish to change ELC settings for their 3 year old funded ELC, should apply during registration week according to advertised timescales.

Frequently Asked Questions

Please see below some common FAQs. More in depth FAQs, particularly on the registration process, can be found here: <https://www.argyll-bute.gov.uk/education-and-learning/early-learning-and-childcare/early-learning-childcare-elc-frequently-asked>

What do I need to know if my child accesses a place at a Partner Provider of ELC?

A Partner Provider nursery, playgroup or childminder is commissioned by the local authority to provide Early Learning and Childcare. You may be asked to sign a form at your setting con ensure the nursery receives their funding for ELC.

Is transport provided for ELC?

ELC provision has no entitlement to transport, unless in exceptional circumstances. Please read our transport leaflet found on the Useful Documents page on our website.

Can my child attend more than one Early Learning and Childcare setting (known as a blended placement)?

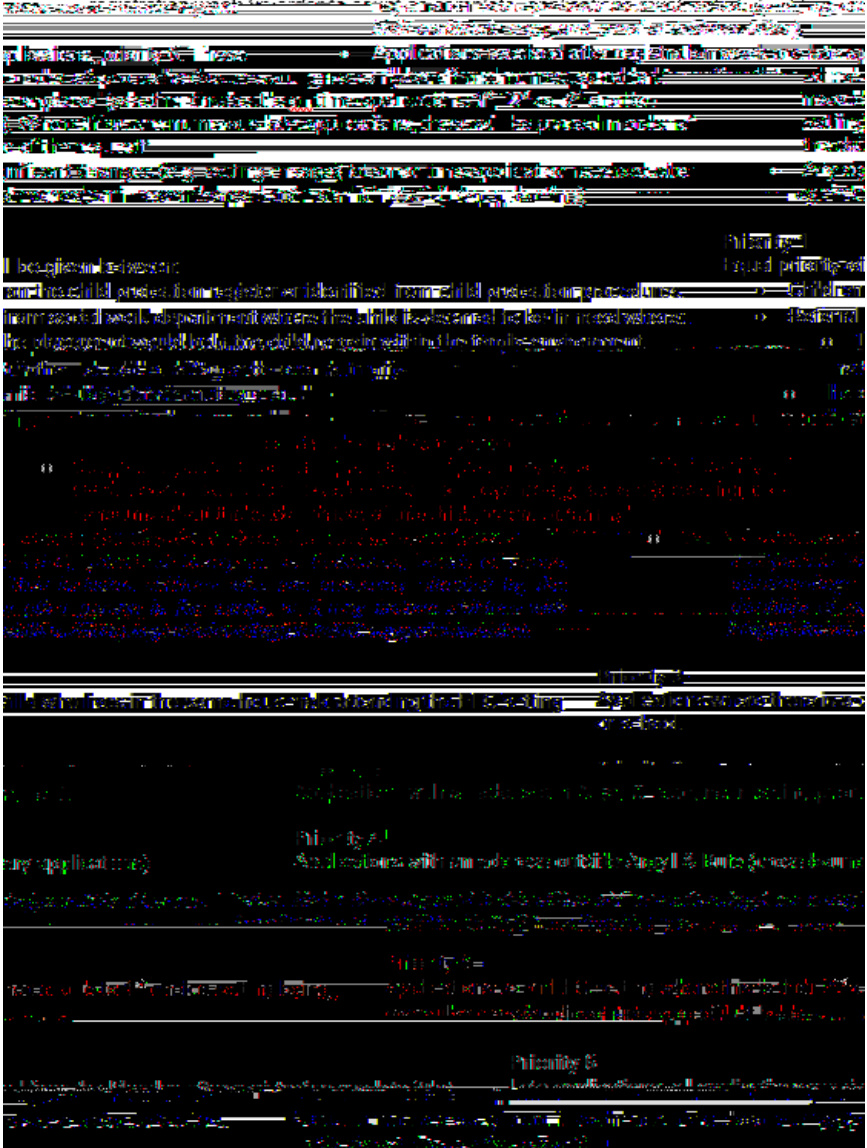
childcare. This means consistency of relationships with staff and other children;

Early Learning

Appendix 2: New Application Admission Priorities

The below details how new applications for ELC are categorised:

- Priorities 1-4 apply to applications at the first choice ELC setting.
- Priorities 1-5 apply only to complete ELC applications that are received during



Appendix Three: Ballot Procedure

In February ELC settings collate new applications received during the registration period. Where there are more requests than places available, and therefore they are oversubscribed for the following August, the below ballot procedure is initiated at local authority settings:

1. All applications are categorised as per New Application Admission Priorities (See Appendix 2).
2. Ballot date and witnessing procedure is agreed (*Early Years will witness all ballots for an ELC space, 2nd ELC setting staff member will witness ballots that are only for a waiting list place*).
3. Space allocation begins, starting with Priority 1, to establish which applicants will be in the ballot.
4. Applicants affected are advised that ELC setting does have enough space for all applications and their application will be included in a ballot.
5. Ballot takes place following witnessing procedure agreed:
 - a. ELC setting works their way through each category of applications (in priority order), picking names to establish the order

Contact Information

Argyll and Bute Council, Education Service, Early Years

Argyll House, Alexandra Parade, Dunoon, PA23 8AJ

(For mail only, please note this is not a Customer Service Point)

Early Years Helpline:

01369 708503 Monday to Friday 9am - 5pm

earlyyears@argyll-bute.gov.uk

<https://www.argyll-bute.gov.uk/education-and-learning/early-learning-and-childcare>



This information leaflet can be supplied in other languages and formats. Please contact the Early Years helpline.