

Action	Output	Responsible
--------	--------	-------------

Action	Output	Responsible person(s)/ organisation(s)	Timescale
Key Aim 4. Waiting lists for, and allocation of, R			

Action	Output	Responsible person(s)/ organisation(s)	Timescale
Key Aim 5. Planning for services is based on robust data and information			
5.1	<p><i>Improve comprehensiveness and consistency of OT caseload data</i> Review protocols for data capture to enable reporting of OT caseload data that includes a breakdown by type of service provision, household type and long-term conditions, by local area.</p>	OTs	April 2019
5.2	<p><i>Continue to work in collaboration to development strategic documents</i> Argyll and Bute Council Housing and Argyll and Bute HSCP Public Health will continue to work in collaboration to further understand housing needs, particularly recognising a current gap for those with Mental Illness, people with autism and for those who experience homelessness. The Housing contribution statement, HSCP Joint Strategic Needs Assessment and the Housing Needs and Demands Assessment are all examples where collaborative working will be beneficial.</p>	Allan Brandie/Sarah Griffin	Report back to Strategic Housing Forum: May 2019

•

•

•

•

•

•

•

•

•

•

•

•

•

•

•

•

•

•

•

•

- The number of adults 16-64 claiming disability benefits (around 3500) is high compared to the

•

-
-
-

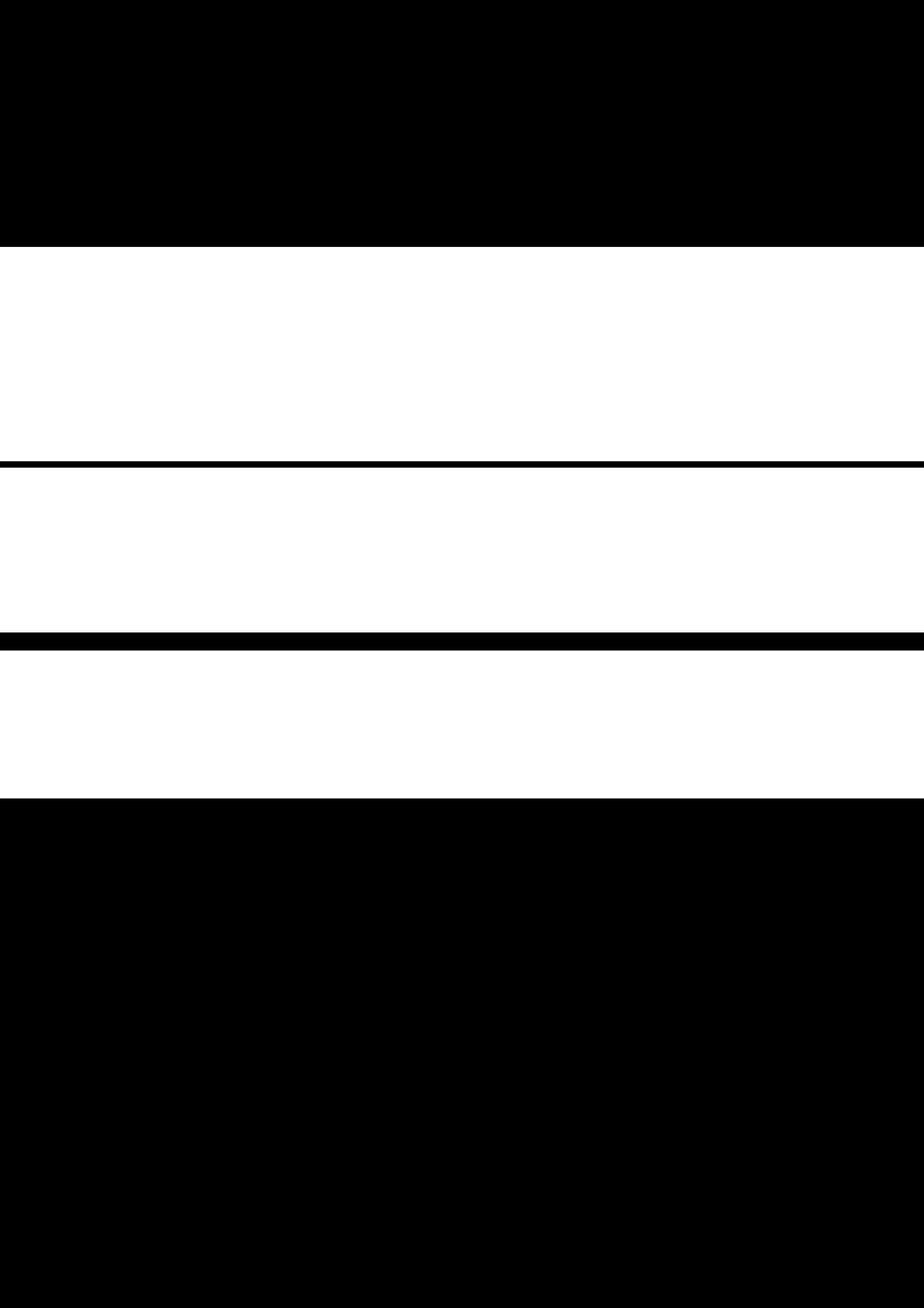
•



-
-
-

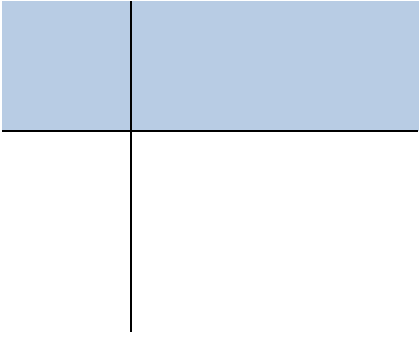
•
•

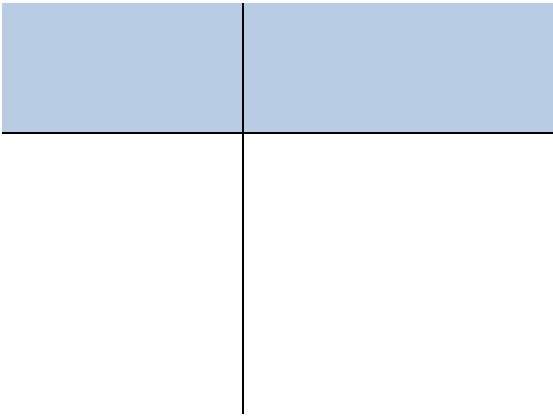
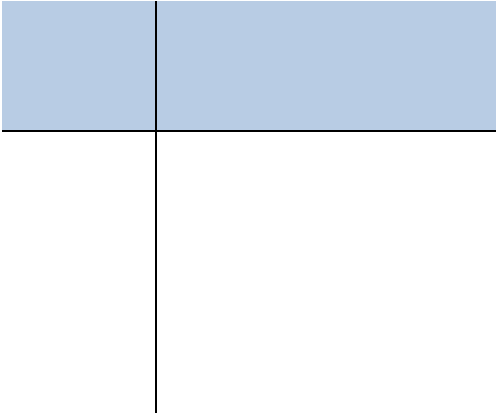
•

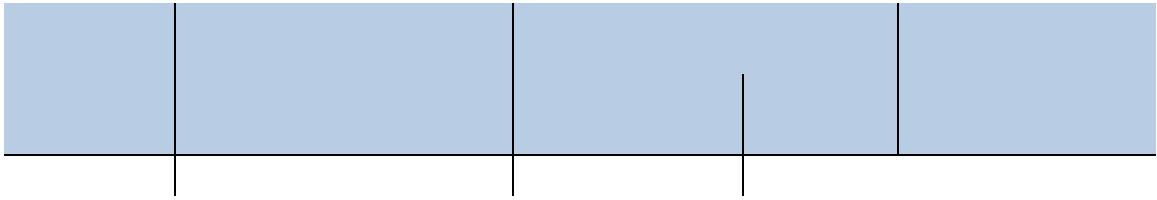


















•

•

•

•

•

•

•

•

•

•

•

•

•

•

•

•

Condition	0 to 15	16 to 24	25 to 34	35 to 49	50 to 64	65 to 74	75 to 84	85 +	Total
All people	14435	8439	8021	17886	20049	10761	6243	2332	88166
One or more conditions Deafness orc	10%	15%	17%	23%	38%	53%	70%	86%	32%

•

•

Main disabling condition	People age 0-15 eligible for DLA	
	Number	%
Learning Difficulties	208	46%
Hyperkinetic Syndrome	48	11%
Behavioral Disorder	34	8%
Diabetes Mellitus	23	5%
Neurological Diseases	18	4%
Disease Of The Muscles, Bones or Joints	13	3%
Skin Disease	13	3%
Deafness	8	2%
Cystic Fibrosis	7	2%
Renal Disorders	7	2%
Severely Mentally impaired	6	1%
Arthritis	5	1%
Chest Disease	5	1%

People age 16-64 eligible for DLA February 2017		
Main Disabling Condition	Number	% of eligible
Learning Difficulties	286	16%
Psychosis	277	16%

•
•

•

Adults aged 65+

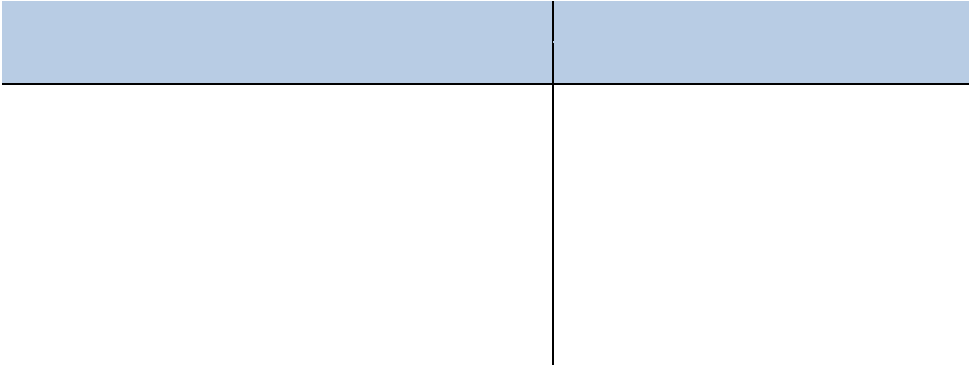
-
-
-
-



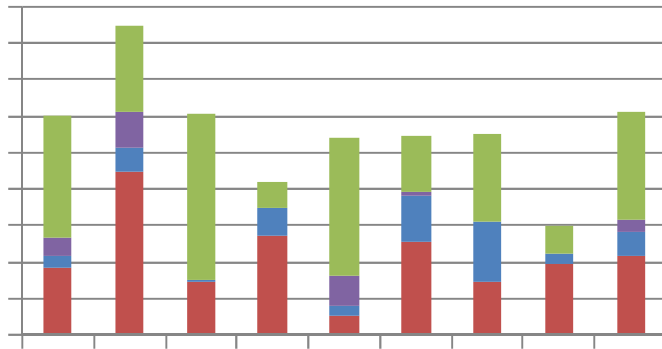
--	--	--	--	--



-
-
-
-
-
-
-
-

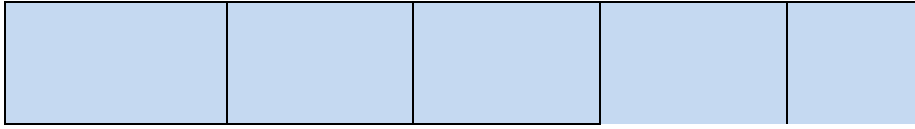


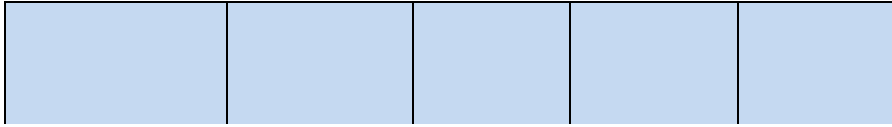
-
-
-
-
-
-
-
-



1

-
-
-
-





|

Joint working - themes	







•

•

•

•

•

•

•

•

•

•

•

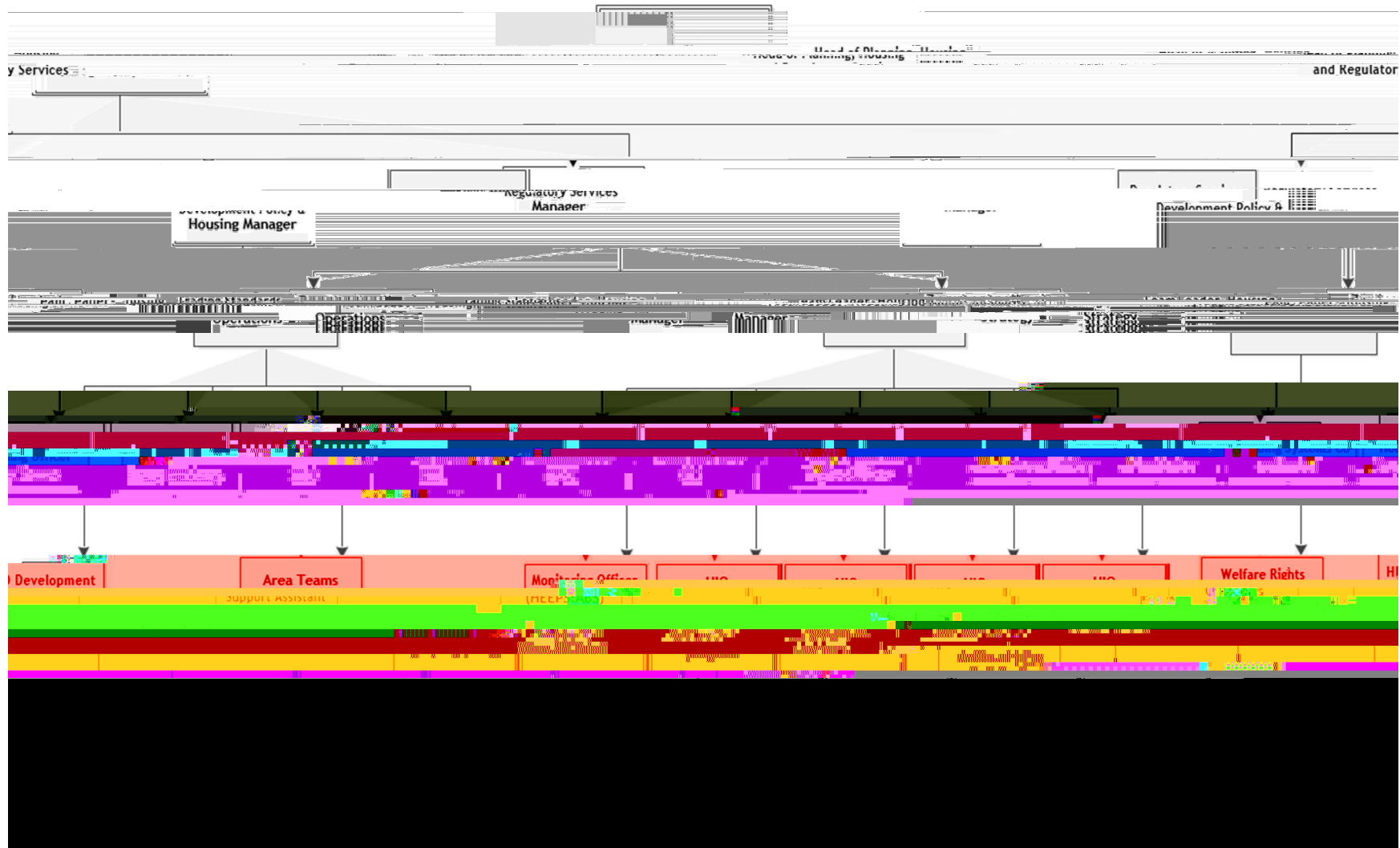
•

•

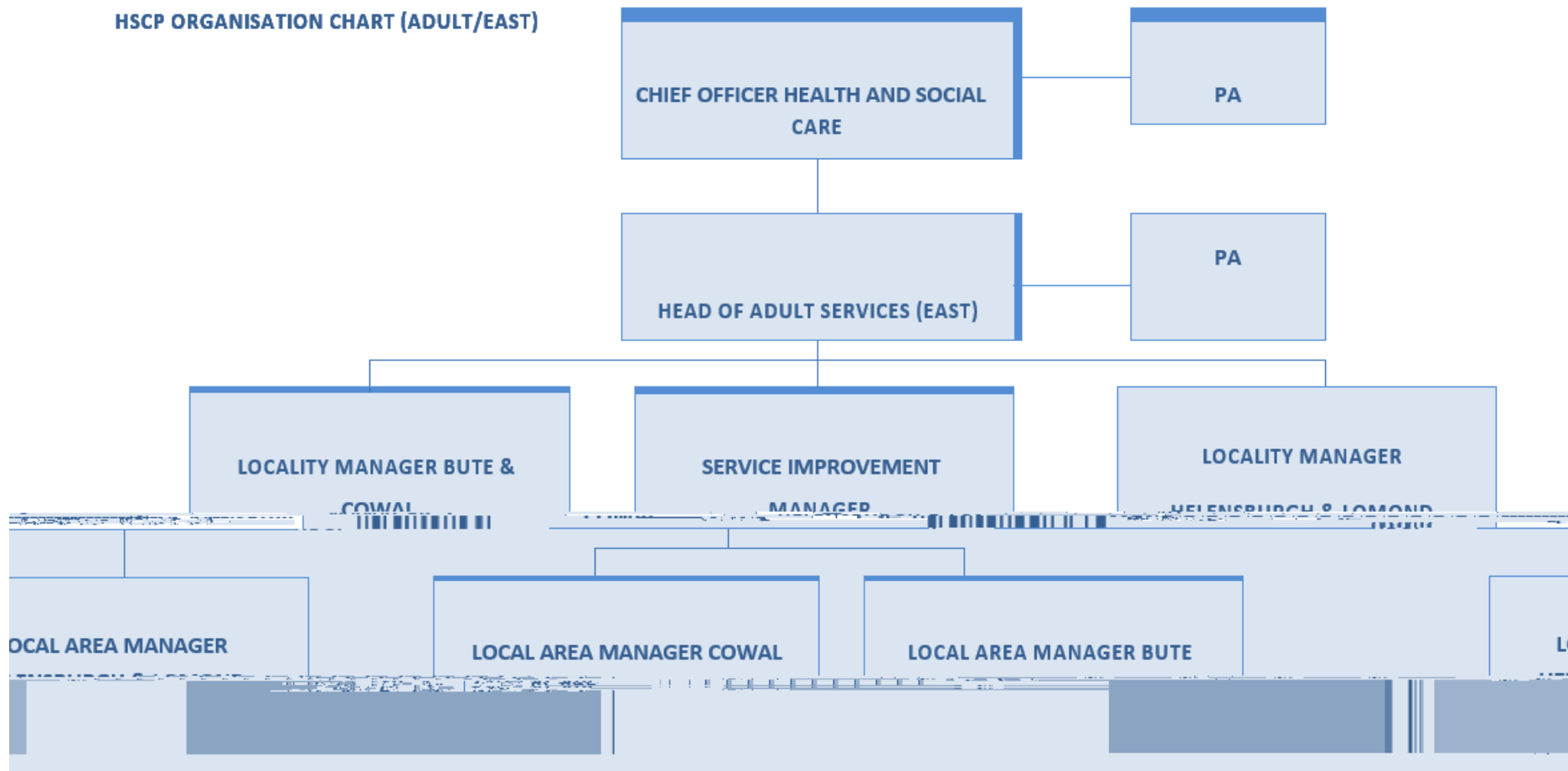
•

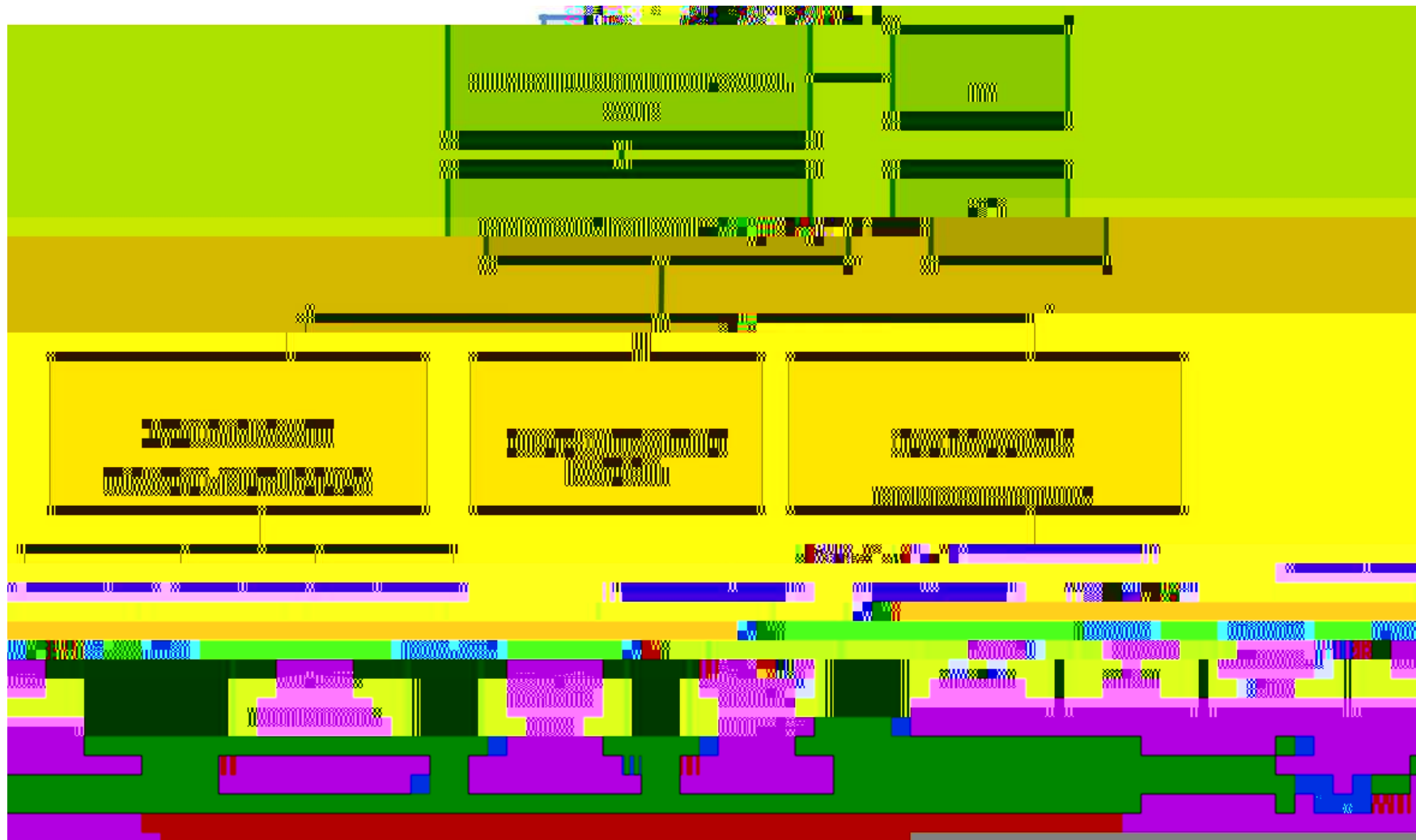
-
-
-
-
-
-
-
-

•



HSCP ORGANISATION CHART (ADULT/EAST)





Based on the above feedback, 2/3 SMART actions will be developed for inclusion in the revised report.

CONCLUSION

The workshop provided a valuable opportunity for positive inter-agency engagement and a dedicated forum for detailed exploration of strategic needs assessment. Practical outputs included the identification of shared vision, priorities and strategic outcomes; and a strong steer towards the development of a SMART action plan for inclusion in the final report. Other recommendations and issues were also identified for retention/inclusion in the final report, which will now form the basis of future iterations of the SCP, LHS and HCS. The latter is due

